



The Flow

Springfield Water & Sewer Commission

Volume 3, Issue 11
November 2024



More Information

603 West Main Street
Springfield, KY 40069
(859)336-5454
service@springfieldwater.org
www.springfieldwater.org

WATER & SEWER RATE INCREASE

⇒ What is happening?

You may notice a slight increase in your water and sewer bill this month. Effective with bills received in November 2024, customers will begin seeing the effect of the new water and sewer rates that were formally approved on October 8, 2024, by Springfield City Council. The water portion of the bill for a typical resident in the city limits using 4,000 gallons will be \$29.70 per month, an increase of \$5.77, which is still much lower than the statewide average cost of \$38.71 per month. The sewer portion of the bill for a similar residential customer will be \$52.99 per month, an increase of \$1.04. Likewise, the county residents can expect to see a change in their monthly bill as well. The average 4,000-gallon user whose water bill runs them \$48.32 can now expect it to be about \$54.56, a \$6.24 increase.



The decision to increase rates is never easy so we hired a consultant to help us figure it out. Kentucky Rural Water Association is a non-profit organization of committed utility leaders who provide all types of assistance to water and sewer utilities throughout the state. Bob Miller is the Association's lead consultant and performs numerous rate reviews with communities across Kentucky. We worked with Bob through the entire process and got him the data that was necessary to complete the review and to make recommendations regarding the rates.

⇒ Why is it happening?

While the Springfield Water and Sewer Commission has put a 2% increase on the bills each year for several years, the last significant increase customers had on their water bills was in 2014. Inflation is a driving factor for the proposed increase. Most have noticed that everything costs much more than it did a couple of years ago so one can imagine the 2% increase is doing nothing to cover the rising operational costs. We have been dealing with significant price increases for many of the necessary resources used in the water treatment process. For example, chemicals to help treat the water have increased 77% since 2021 and lab expenses have increased 132% along with many others.

Another key driver is the replacement of aging and failing infrastructure. Some of the existing infrastructure dates to the early 1900's and is prone to frequent breaks. These older pipes also have corrosion and mineral buildup issues which contribute to poor water quality and restrict water flow needed for fire protection.

Many of our water mains in the city are the oldest in our system and are at the end of their useful life. It is no surprise this is also where most of our breaks and leaks occur. When our repair costs start adding up, we know it is time to replace them.



EFFICIENT & HIGH QUALITY WATER SUPPLY

RATE INCREASE (CONTINUED)

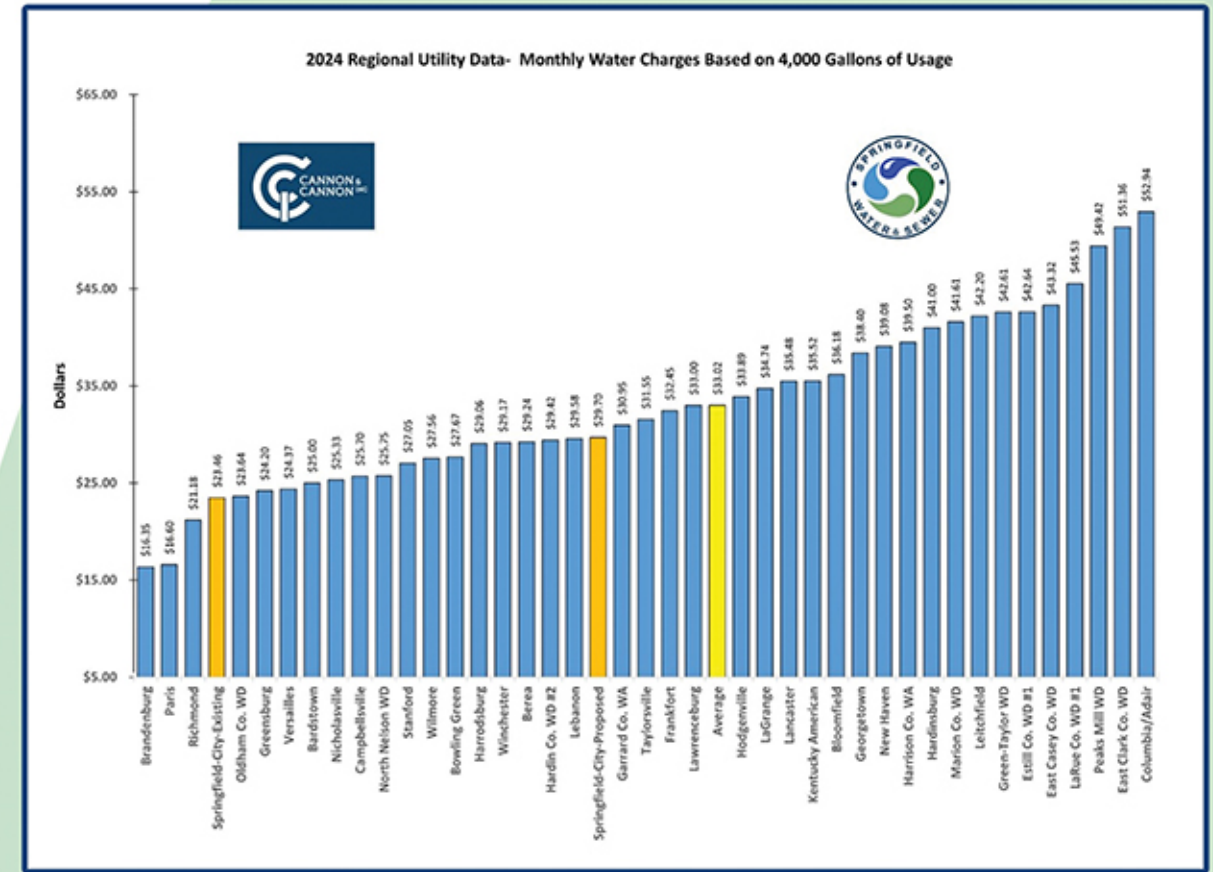
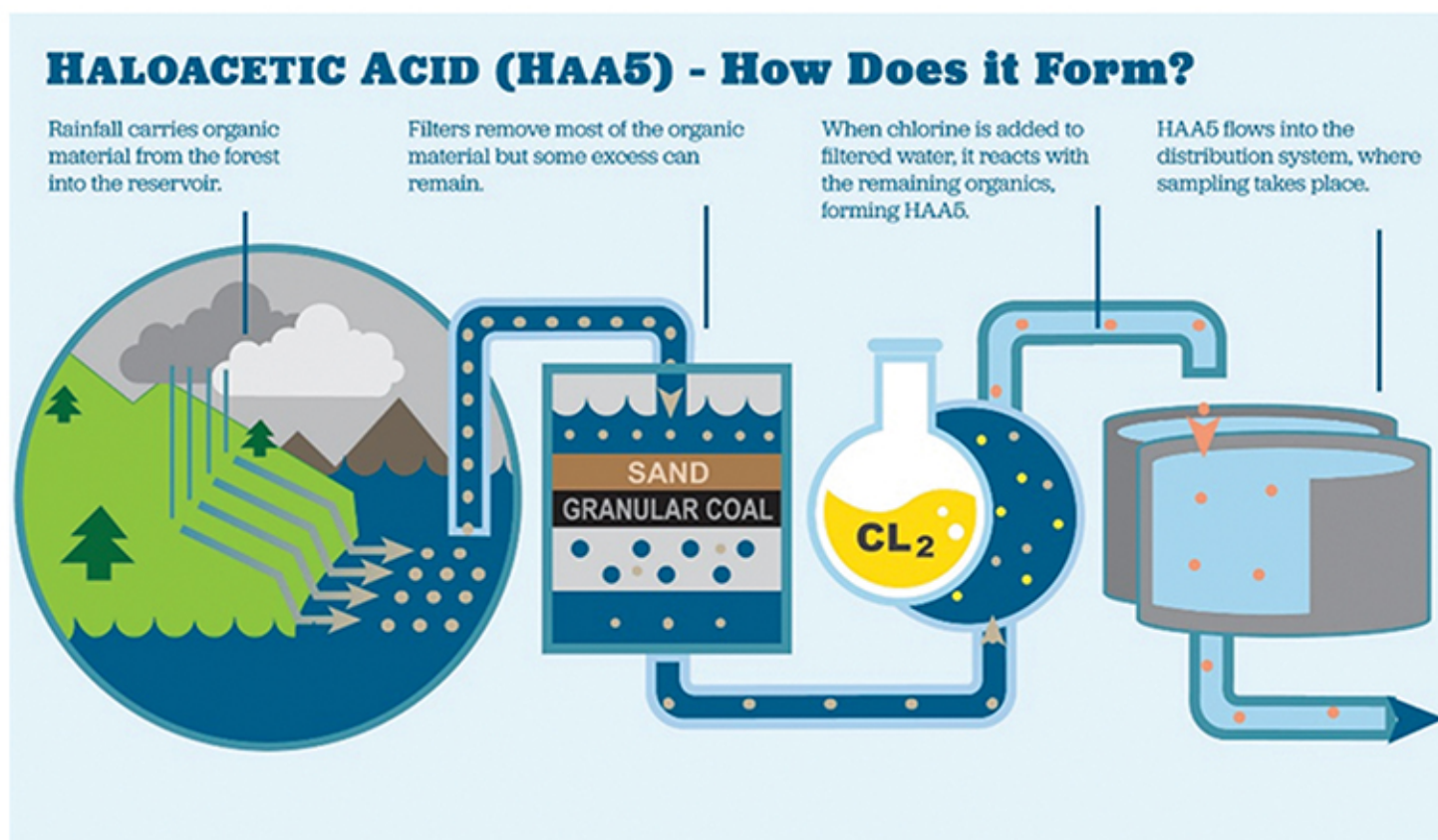
Another key driver is the replacement of aging and failing infrastructure. Some of the existing infrastructure dates to the early 1900's and is prone to frequent breaks. These older pipes also have corrosion and mineral buildup issues which contribute to poor water quality and restrict water flow needed for fire protection.

Many of our water mains in the city are the oldest in our system and are at the end of their useful life. It is no surprise this is also where most of our breaks and leaks occur.

When our repair costs start adding up, we know it is time to replace them. Look at this new pipe compared to what some of our pipes look like:



The U.S. Environmental Protection Agency regulations continue to be a challenge and impact how we treat water today and how we will into the future. We always maintain compliance with drinking water standards, including the new Lead and Copper Rule Revisions, but that comes at a cost too and more regulations for emerging contaminants such as PFAS are on the way.



⇒ How is it happening?

The overall increase will be phased in over a period of 6 years. Raising the rates incrementally will allow everyone to better budget for the change. We are working hard to make sure that we are doing what's right for Springfield and Washington County in the long term. Continued investment in the system allows incremental and systematic improvements to be made to keep assets dependable which lessens emergencies and system failures. We are chipping away at it and continue looking for grants and financial assistance that lessen the burden on our customers.

We understand our role in this community and are committed to improving our infrastructure as we maintain the quality and reliability of our drinking water.



Serving the cities of Springfield, Mackville, Willisburg and surrounding communities since 1951.

