



Springfield Water & Sewer Commission

Rate Information

603 West Main Street
 P.O. Box 307
 Springfield, KY 40069
 (859)336-5454
 service@springfieldwater.org
 www.springfieldwater.org

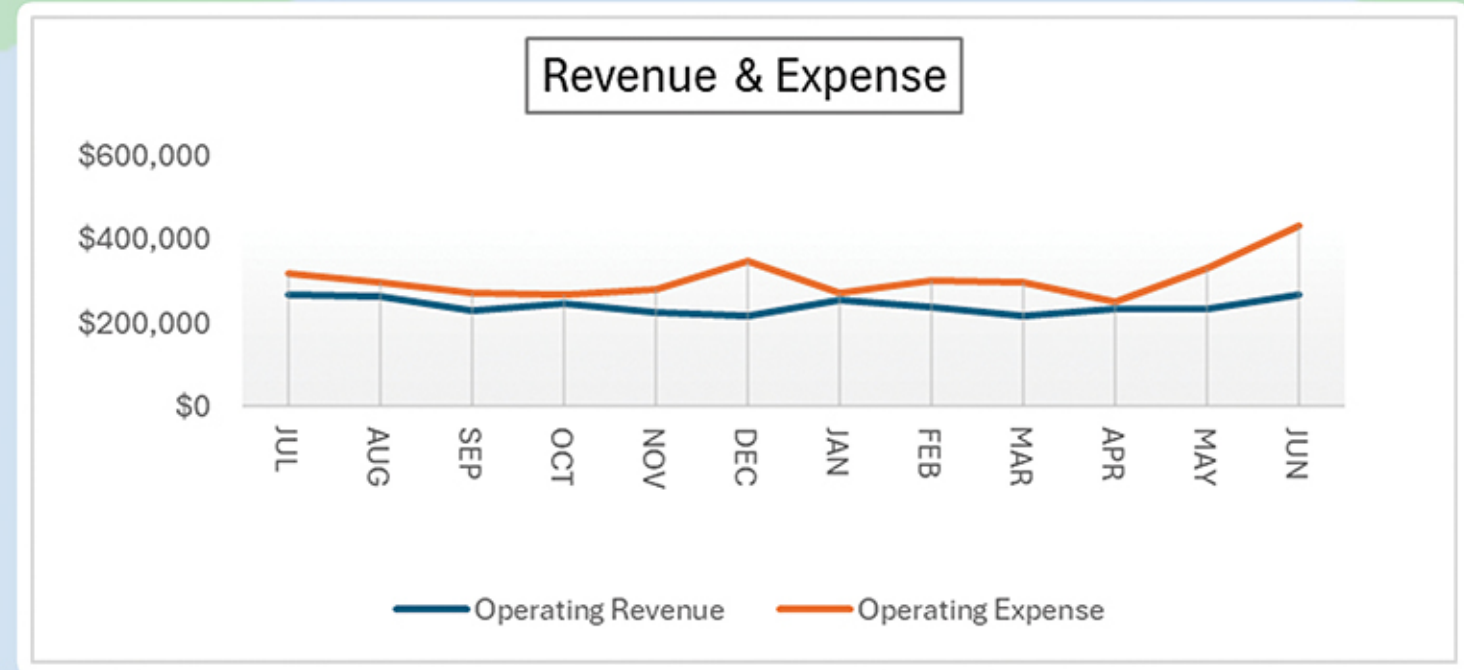


RATE INCREASE FACT SHEET



WHY DOES THE WATER UTILITY NEED A RATE INCREASE?

⇒ Chemical, power and infrastructure replacement costs have all been on the rise and our existing rates are no longer enough to keep up. We also have more EPA regulations to deal with and that means needed investment in our treatment plant.



PROJECTS ARE PLANNED TO ENSURE QUALITY AND RELIABILITY

⇒ Our capital projects include meter upgrades, lead/copper abatement, water line rehabilitation & replacement and upgrades to our drinking water treatment plant to improve the treatment process to keep up with the changes to drinking water regulations.

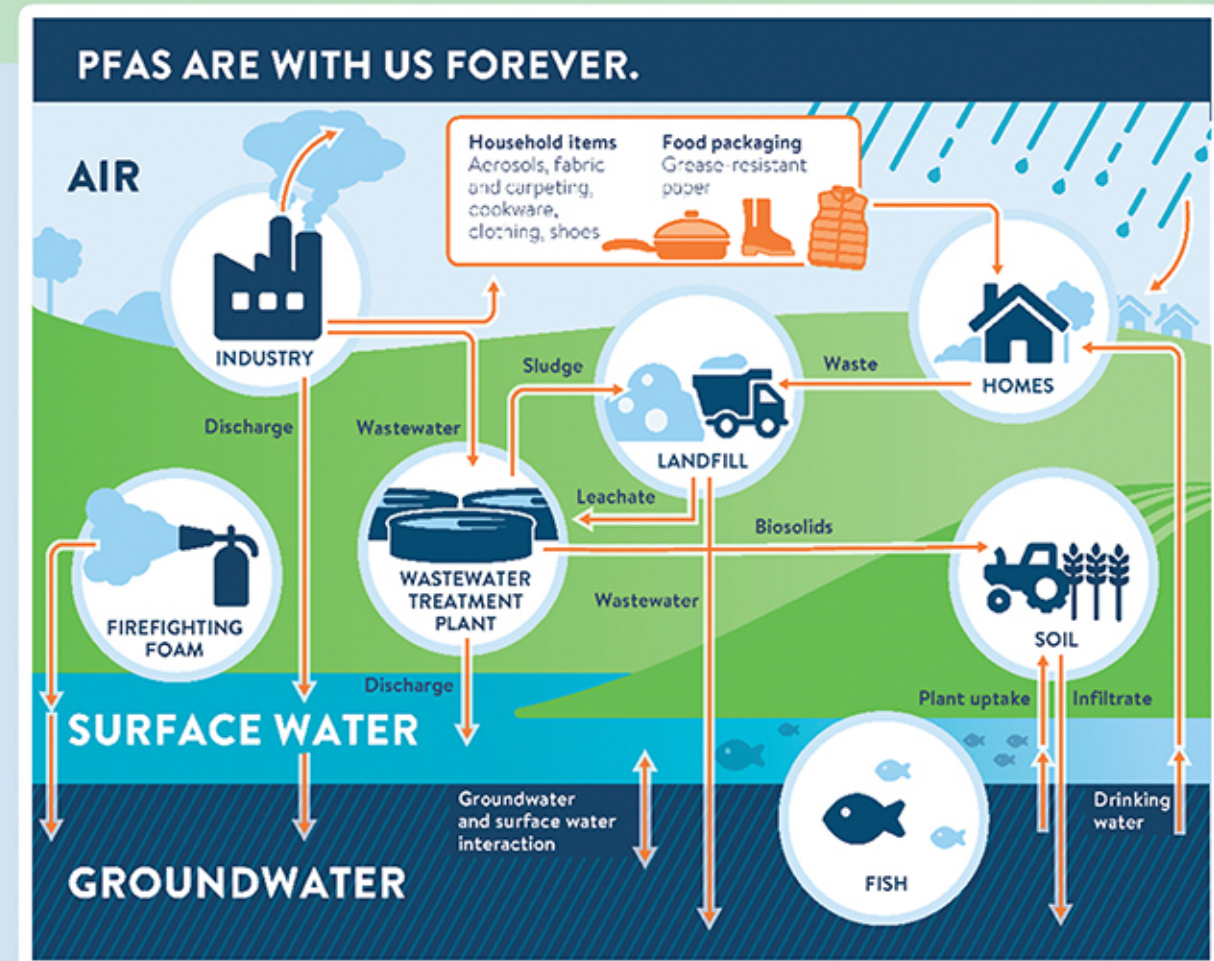


What a corroded 50 year old cast iron pipe looks like on the inside.

⇒ We are working to replace these old pipes with new PVC pipes, which means less breaks and less repair costs.

IT HAS BECOME INCREASINGLY MORE COSTLY TO KEEP UP WITH EMERGING REGULATORY REQUIREMENTS

⇒ Per- and polyfluoroalkyl substances (PFAS) are a large, complex group of synthetic chemicals that have been used in consumer products around the world since about the 1950s. Trihalomethanes (THM) and haloacetic acids (HAA) are disinfection by-products (DBPs) that form when disinfectants, such as chlorine, react with organic matter. They can lead to health problems and the EPA is mandating more stringent regulation which means costly water treatment plant upgrades.



THE PROPOSED RATE STRUCTURE IS MORE FAIR AND WILL BE PHASED IN OVER 5 YEARS

⇒ Our current structure is based on a declining rate block which means the largest users get the cheapest rates, we're adjusting the rate tiers to make sure everyone pays their fair share for the water they use.

BILL COMPARISON (FOR 4000 GALLONS)

	2024	2025	2026	2027	2028
AVERAGE CITY CUSTOMER (WATER AND SEWER)	\$ 82.69	\$ 85.53	\$ 88.50	\$ 91.61	\$ 94.85
AVERAGE COUNTY CUSTOMER (WATER ONLY)	\$ 54.56	\$ 55.47	\$ 56.44	\$ 57.47	\$ 58.55